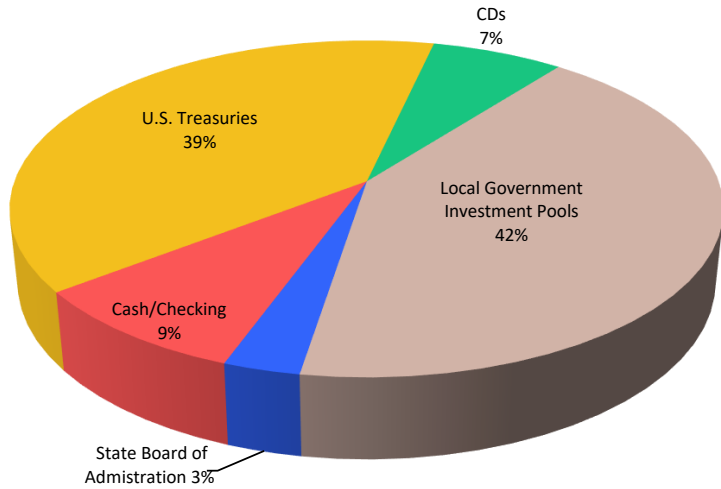


December 2025 Investment Report



Allocation by Investment Type

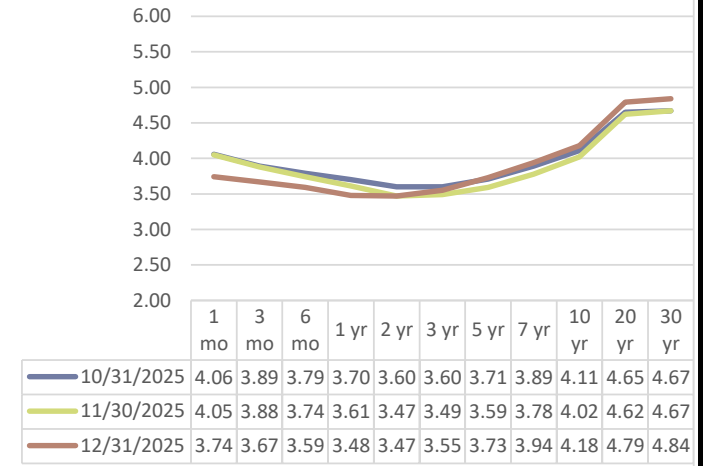


Current Yields as of December 2025

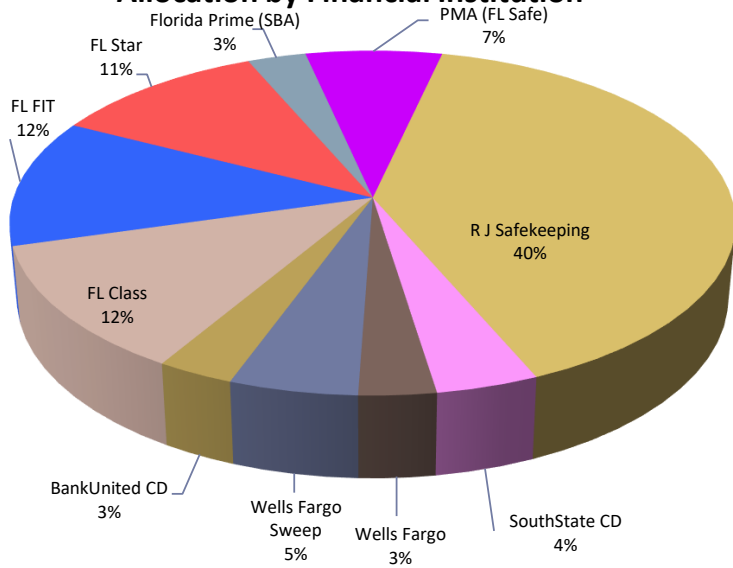
Portfolio : 3.67%

- 1 Month Treasury : 3.74%
- 3 Month Treasury : 3.67%
- 6 Month Treasury : 3.59%
- 1 Year Treasury : 3.48%
- 2 Year Treasury : 3.47%
- 3 Year Treasury : 3.55%
- 5 Year Treasury : 3.73%
- 10 Year Treasury : 4.18%
- 20 Year Treasury : 4.79%

Treasury Yield Curve (Past 3 Months)



Allocation by Financial Institution



Interest/Dividend Detail December 2025

<u>Bank/Firm</u>	<u>Int./Divid.</u>
R J Safekeeping	\$40,000
FL Class	\$36,688
FL FIT	\$24,061
FL Star	\$20,671
Wells Fargo Sweep	\$19,762
PMA (FL Safe)	\$19,658
R J Safekeeping	\$9,625
Florida Prime (SBA)	\$9,501
R J Safekeeping	\$7,333
R J Safekeeping	\$7,233
R J Safekeeping	\$6,952
Other	\$31,511
Accrued-See Detail	\$68,612

Upcoming Maturities

01/21/26	BankUnited CD CD-4473
01/25/26	BankUnited CD CD-3136
02/22/26	BankUnited CD CD-3432
03/13/26	R J Safekeeping 3130AV6J6
03/22/26	SouthState CD CD-68112
04/24/26	SouthState CD CD-3350
05/01/26	R J Safekeeping 3140HTT66
06/12/26	R J Safekeeping 3130AWAH3
07/01/26	R J Safekeeping 3138LECC3
07/30/26	R J Safekeeping 3133EPZY4
12/18/26	R J Safekeeping 3135G06L2

DECEMBER
ACCRUED INTEREST DETAIL



	Accrued
1 Fed Mtg Note (Ray James)	1,858.34
3 Fed Mtg Note (Ray James)	7,500.00
4 Fed Mtg Note (Ray James)	4,000.00
5 Fed Mtg Note (Ray James)	4,166.67
6 Fed Mtg Note (Ray James)	7,816.66
7 Fed Mtg Note (Ray James)	6,744.81
8 Fed Farm Credit Bank (Ray Ja	6,900.00
9 Fed Mtg Note (Ray James)	6,666.66
10 Fed Farm Credit Bank (Ray Ja	3,416.67
11 Fed Mtg Note (Ray James)	641.65
30 BankUnited CD	3,330.17
31 BankUnited CD	3,288.89
32 BankUnited CD	3,331.58
33 South State CD	5,548.01
34 South State CD	3,401.76
37	68,611.87
38	
39	
40	

	% of Invested	In
<u>Policy Maximums</u>	<u>Total</u>	<u>Compliance</u>
95% US Treasury Max	39.0%	Yes
40% Gov't Enterprises Max	0.0%	Yes
75% Local Gov't Invest Pools Max	42.0%	Yes
5% State Board of Admin Max	3.0%	Yes
10% State & Local Gov't Max	0.0%	Yes
40% CD's Max	7.0%	Yes
10% Corporate Debt Max	0.0%	Yes
40% Commercial Paper	0.0%	Yes
10% Repurchase Agreements Max	0.0%	Yes
<u>Individual Security Max</u>		
25% Max in Single Security	5.4%	Yes
<u>Individual Financial Institution Max</u>		
50% Max in any One Institution	12.3%	Yes

(No R J Safekeeping included)

Current Holdings - Detail



Type	Broker/Dealer	ID	% of Holdings	Maturity	Rate	Balance
Cash	Wells Fargo	4355704495	3.38%	N/A	0.00%	\$3,045,346
Cash	R J Safekeeping	RJ-603D0210	0.00%	N/A	1.00%	\$130
Cash	Wells Fargo Sweep	DDA 435570449	5.42%	N/A	3.66%	\$4,888,016
Certificates of Deposit (QPD's)	BankUnited CD	CD-3136	1.11%	1/25/26	3.83%	\$1,000,000
Certificates of Deposit (QPD's)	BankUnited CD	CD-4473	1.11%	1/21/26	3.83%	\$1,000,000
Certificates of Deposit (QPD's)	BankUnited CD	CD-3432	1.11%	2/22/26	3.83%	\$1,000,000
Certificates of Deposit (QPD's)	SouthState CD	CD-3350	2.47%	4/24/26	4.03%	\$2,227,301
Certificates of Deposit (QPD's)	SouthState CD	CD-68112	1.24%	3/22/26	3.94%	\$1,115,973
U.S. Treasuries and Federal Agencies	R J Safekeeping	3130ALGL2	2.16%	2/26/27	1.12%	\$1,945,600
U.S. Treasuries and Federal Agencies	R J Safekeeping	3130AV6J6	2.22%	3/13/26	4.50%	\$2,003,540
U.S. Treasuries and Federal Agencies	R J Safekeeping	3130AWAH3	2.22%	6/12/26	4.00%	\$2,003,580
U.S. Treasuries and Federal Agencies	R J Safekeeping	3132XFL89	2.22%	5/1/28	4.40%	\$1,999,840
U.S. Treasuries and Federal Agencies	R J Safekeeping	3132XGUG9	2.22%	6/1/28	4.34%	\$2,003,500
U.S. Treasuries and Federal Agencies	R J Safekeeping	3132XGXA9	2.18%	6/1/28	4.25%	\$1,967,135
U.S. Treasuries and Federal Agencies	R J Safekeeping	3132XKU70	1.11%	9/1/29	4.25%	\$1,000,260
U.S. Treasuries and Federal Agencies	R J Safekeeping	3132XKXA0	1.10%	10/1/29	4.15%	\$994,940
U.S. Treasuries and Federal Agencies	R J Safekeeping	3133EPZY4	1.12%	7/30/26	5.00%	\$1,007,270
U.S. Treasuries and Federal Agencies	R J Safekeeping	3133ER3L3	2.22%	2/13/29	4.69%	\$1,999,400
U.S. Treasuries and Federal Agencies	R J Safekeeping	3133ERAK7	2.10%	4/10/29	4.38%	\$1,894,604
U.S. Treasuries and Federal Agencies	R J Safekeeping	3133ET4L8	2.21%	12/22/28	3.62%	\$1,997,800
U.S. Treasuries and Federal Agencies	R J Safekeeping	3133ETFN2	2.22%	5/5/28	4.14%	\$2,004,780
U.S. Treasuries and Federal Agencies	R J Safekeeping	3134HAGR8	2.21%	8/28/28	4.00%	\$1,996,560
U.S. Treasuries and Federal Agencies	R J Safekeeping	3134HBMK4	1.11%	8/24/28	4.10%	\$1,001,420
U.S. Treasuries and Federal Agencies	R J Safekeeping	3135G06L2	2.38%	12/18/26	0.88%	\$2,144,560
U.S. Treasuries and Federal Agencies	R J Safekeeping	3136AY6U2	2.44%	11/25/27	3.20%	\$2,198,688
U.S. Treasuries and Federal Agencies	R J Safekeeping	3138LECC3	2.27%	7/1/26	2.42%	\$2,046,001
U.S. Treasuries and Federal Agencies	R J Safekeeping	3140HTT66	2.21%	5/1/26	3.34%	\$1,990,360
U.S. Treasuries and Federal Agencies	R J Safekeeping	3140LKUW1	1.11%	6/1/28	3.85%	\$1,004,943
Local Government Investment Pools	FL FIT	Acct - 9133	11.75%	N/A	4.06%	\$10,604,104
Local Government Investment Pools	FL Star	Acct - 11110	11.30%	N/A	3.84%	\$10,198,342
Local Government Investment Pools	FL Class	Acct - 0001	12.29%	N/A	3.89%	\$11,111,633
Local Government Investment Pools	PMA (FL Safe)	Acct - 0101	6.67%	N/A	3.86%	\$6,014,819
State Board of Administration A	Florida Prime (SBA)	Acct - 1161	3.12%	N/A	3.99%	\$2,816,271
			100.00%			\$ 90,226,714